

MŰSZAKI ISKOLA ADA

ÉPÍTÉSZET ÉS GEODÉZIA

MAGASÉPÍTÉSZ - ÉPÍTÉSZTECHNIKUS

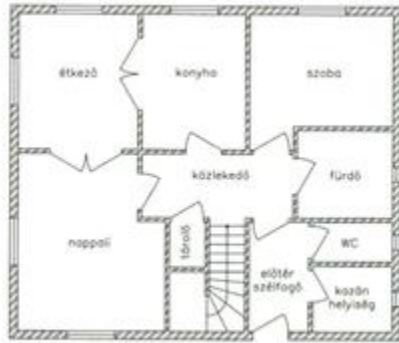


**ÉRETTSÉGI MUNKA FELADAT - ÉPÜLETGÉPÉSZET
TANTÁRGYBÓL (2017/2018.)**

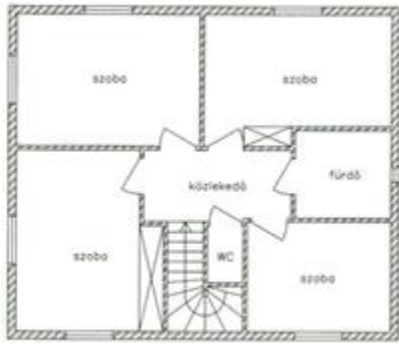
**KÉTSZINTES CSALÁDI HÁZ
VÍZ- ÉS SZENNYVÍZHÁLÓZATÁNAK TERVE**

**ПРОЈЕКТОВАЊЕ ВОДОВОДНЕ И КАНАЛИЗАЦИОНЕ МРЕЖЕ
ДВОЕТАЖНЕ ПОРОДИЧНЕ КУЋЕ**

A Műszaki iskola tanára:
Balog Teodóra

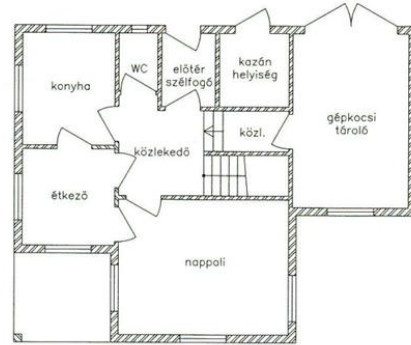


földszint

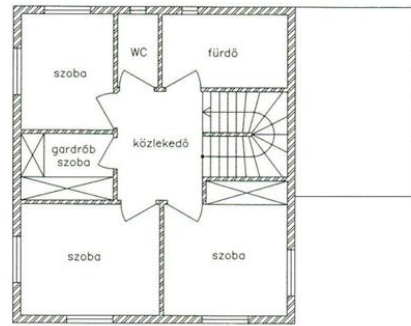


emelet

18.1

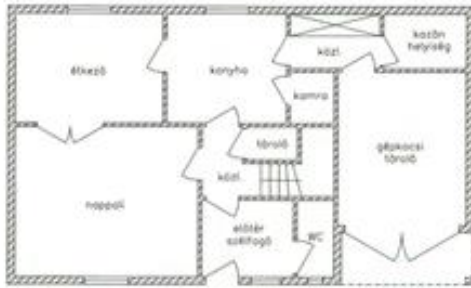


földszint

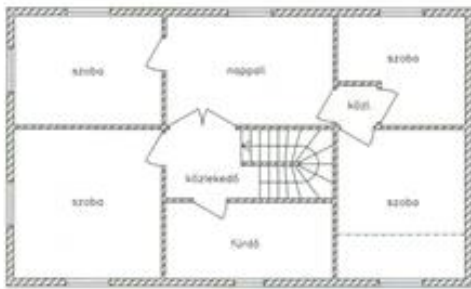


emelet

18.2

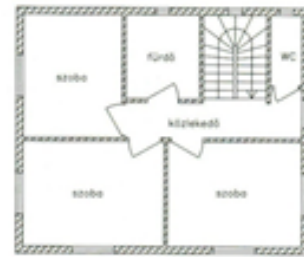


földszint

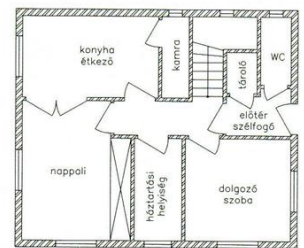


emelet

18.3

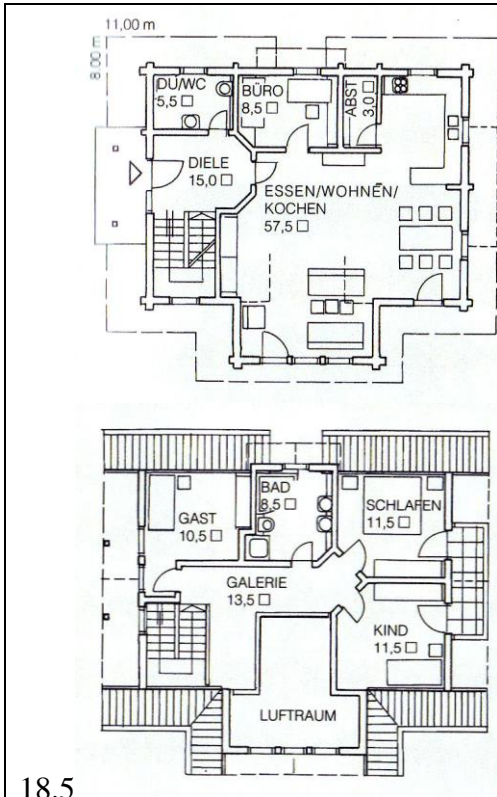


emelet

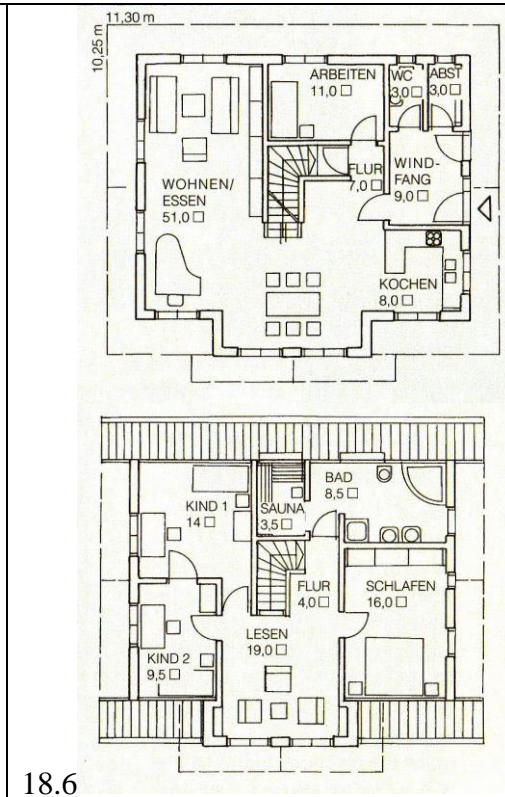


földszint

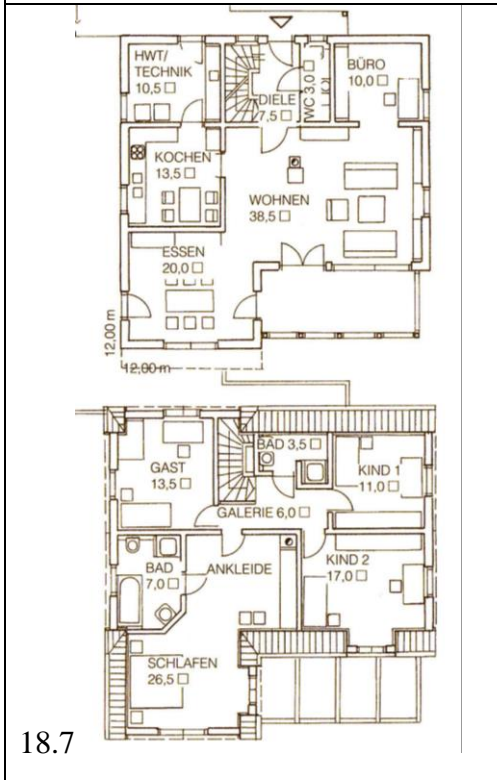
18.4



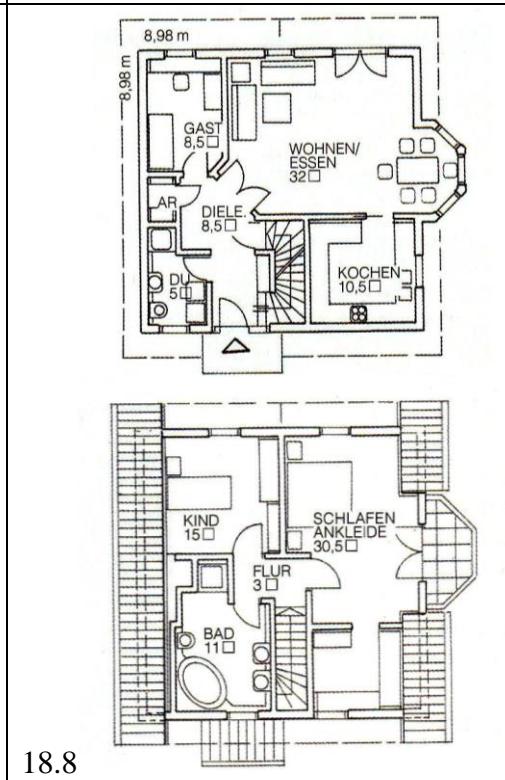
18.5



18.6



18.7



18.8

