

**MŰSZAKI ISKOLA ADA**

**ÉPÍTÉSZET ÉS GEODÉZIA**

**MAGASÉPÍTÉSZ - ÉPÍTÉSZTECHNIKUS**

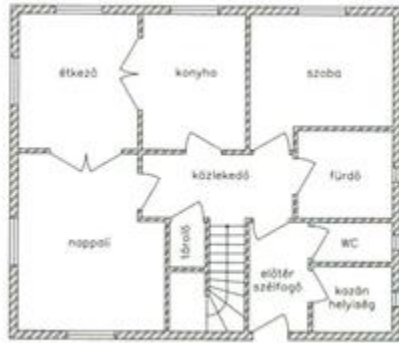


**ÉRETTSÉGI MUNKA FELADAT - ELŐGYÁRTOTT ÉPÍTKEZÉSI MÓD  
TANTÁRGYBÓL (2017/2018.)**

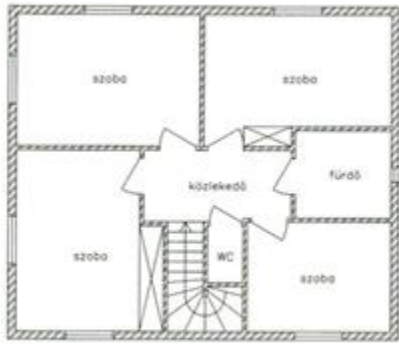
**KÉTSZINTES CSALÁDI HÁZ  
ELŐGYÁRTOTT ELEMKBŐL VALÓ ÉPÍTÉSÉNEK TERVE**

**ПРОЈЕКТОВАЊЕ ДВОЕТАЖНЕ ПОРОДИЧНЕ КУЋЕ ИЗРАЂЕНЕ ОД  
ПРЕФАБРИКОВАНИХ БЕТОНСКИХ ЕЛЕМЕНАТА**

A Műszaki iskola tanára:  
Balog Teodóra

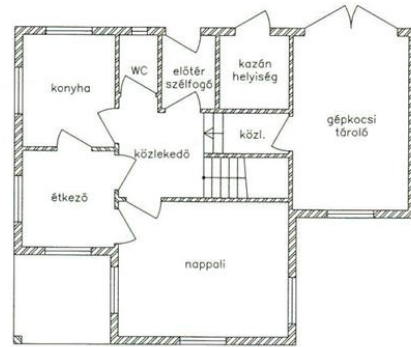


földszint

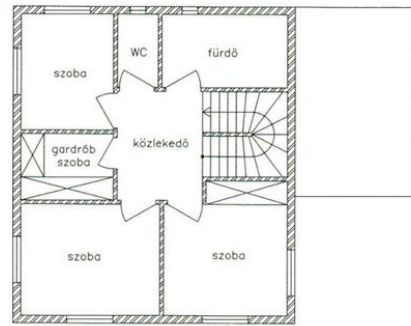


emelet

18.1

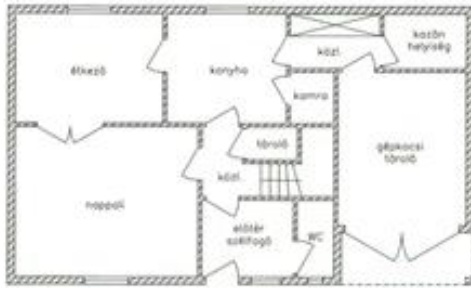


földszint

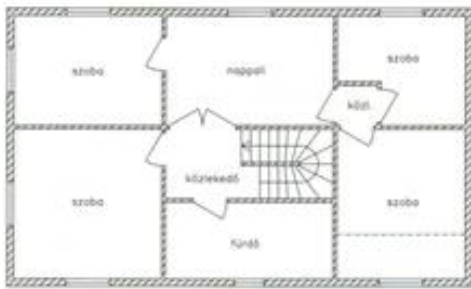


emelet

18.2

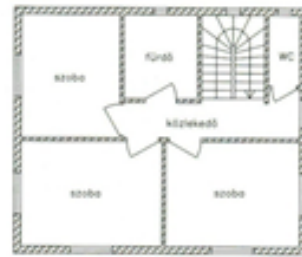


földszint

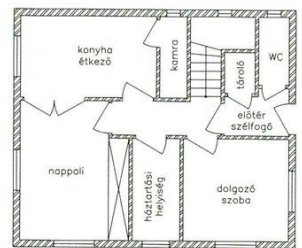


emelet

18.3

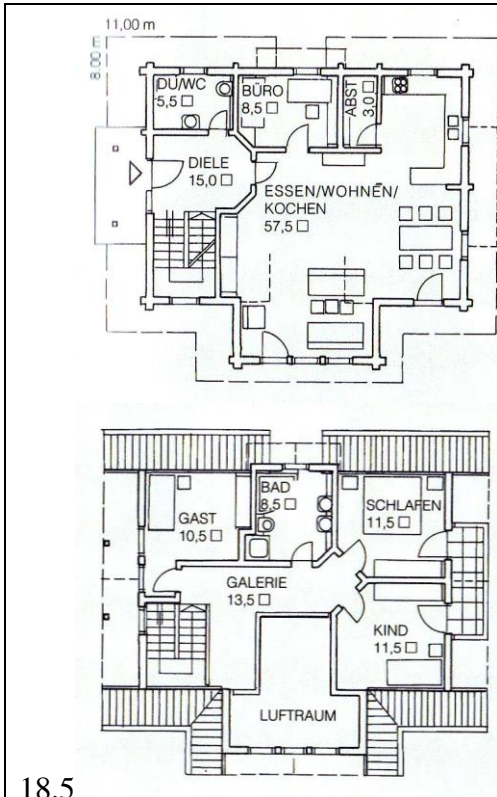


emelet

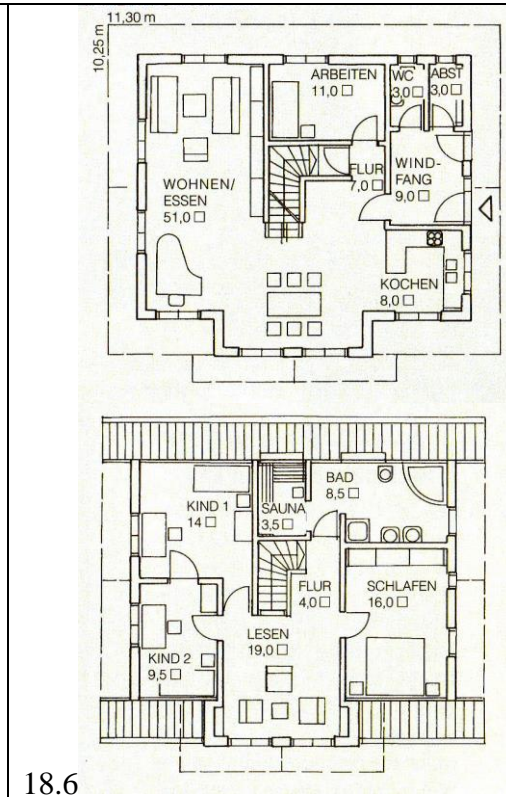


földszint

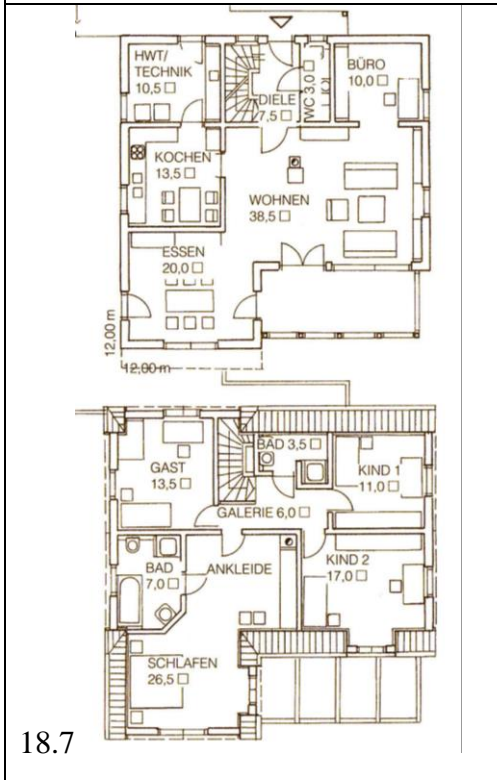
18.4



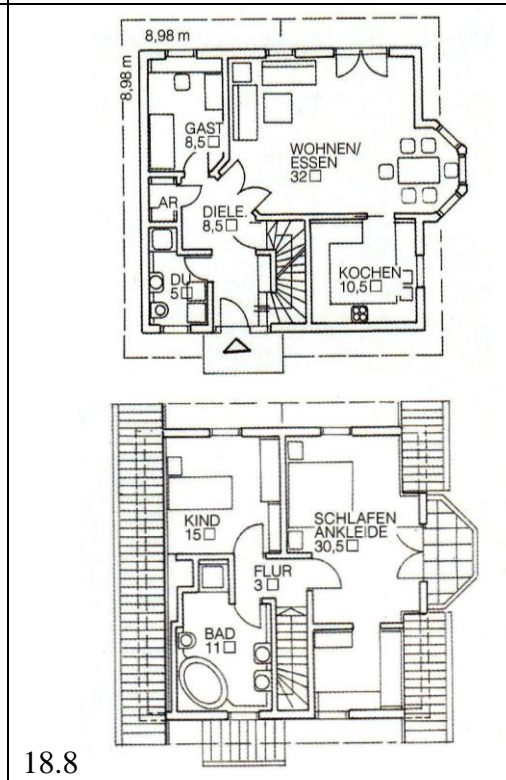
18.5



18.6



18.7



18.8

